



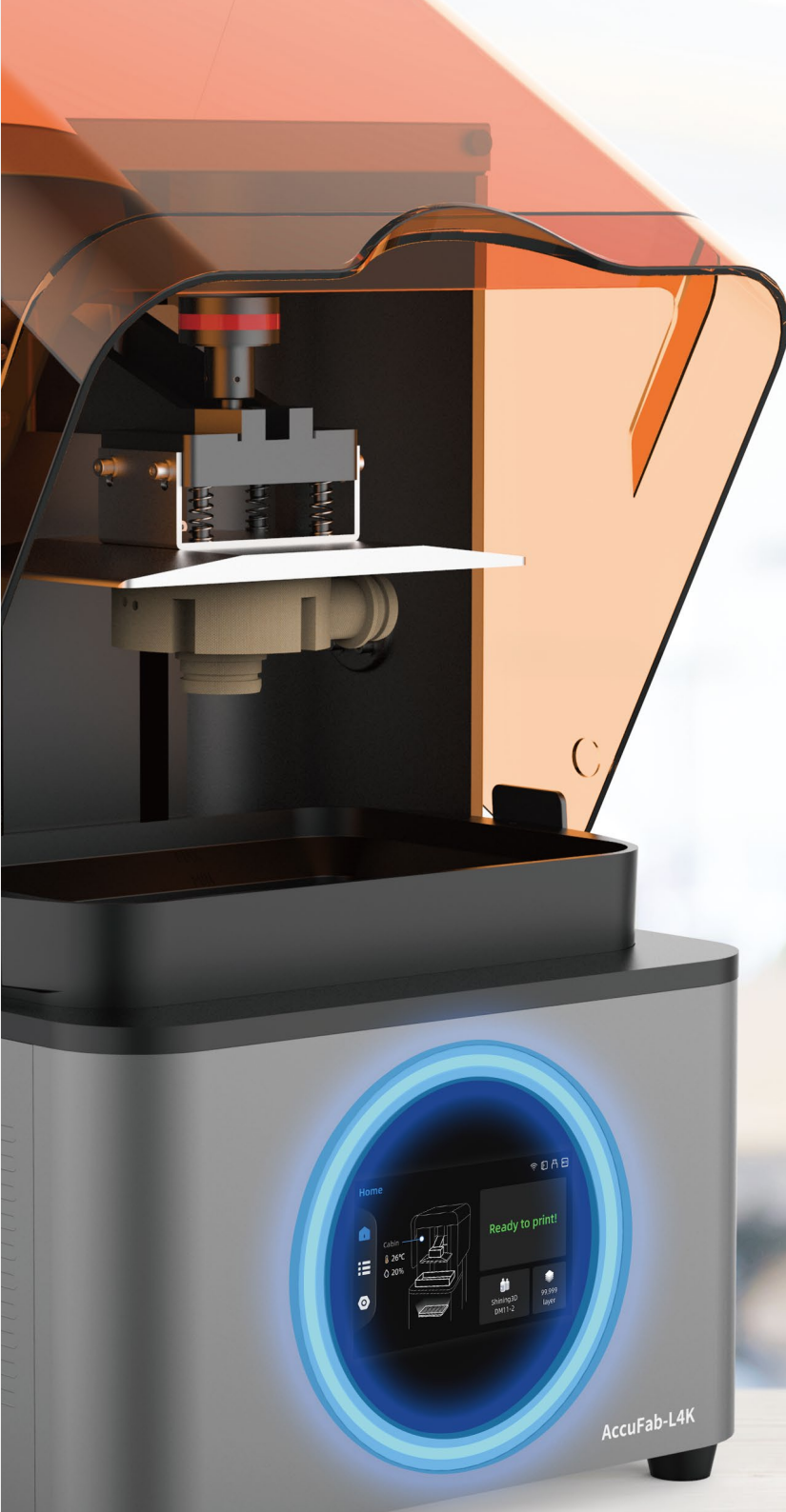
SHINING 3D®

AccuFab-L4K

High-Precision Resin 3D Printer

A high-precision stereolithography 3D printer that improves prototyping efficiency and shortens the new product development lifecycle.





AccuFab-L4K

AccuFab-L4K is a high-precision stereolithography 3D printer independently developed by SHINING 3D. With the help of a 4K resolution and 192 x 120 x 180 mm printing size, AccuFab-L4K produces extraordinary print results with high fidelity while achieving continuous and stable operation.

AccuFab-L4K is your ideal choice to meet most prototyping, engineering, and small volume production needs.



**HIGH
PRECISION**



**HIGH
RESOLUTION**



**HIGH
FIDELITY**



**MULTIPLE
ENGINEERING MATERIALS**



AccuFab-L4K

Unparalleled Accuracy

Accurate Precise

IT7- level printing accuracy, to ensure the printing size is consistent with the design size.

Outstanding Uniformity

High luminance uniformity achieves up to 90%.

Beyond the Limits

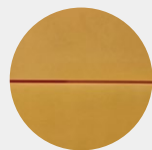
Provides not only the possibility to obtain features smaller than a pixel, but also superior surface finish.



IT7
Accuracy



IT8
Accuracy



IT9
Accuracy



Reliable Performance

State-of-the-Art Robustness

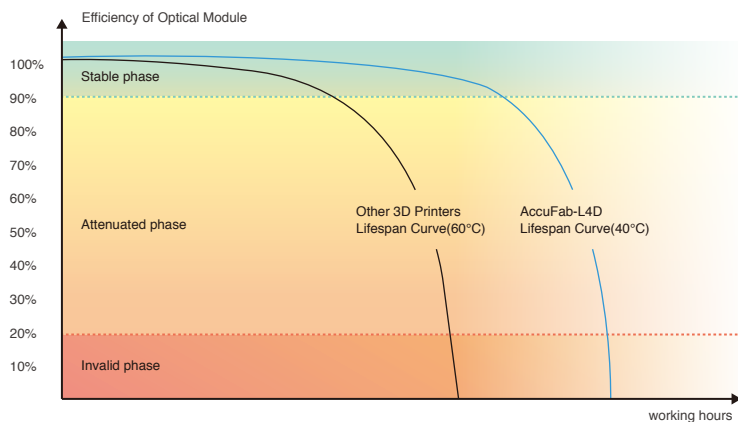
AccuFab- L4K's 5 million layers tested in real engineering condition provides state- of- the- art reliability.

District Cooling System

DCS (District Cooling System) maintains the temperature of optical system under 40°C, while extending the 3D printer lifespan significantly.

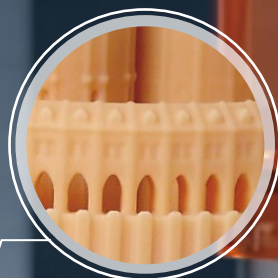
Industrial Grade Components and Quality Inspections

Assembly production adopts industrial-grade components, passed 21 strict factory inspections, to ensure the high quality of the factory equipment.



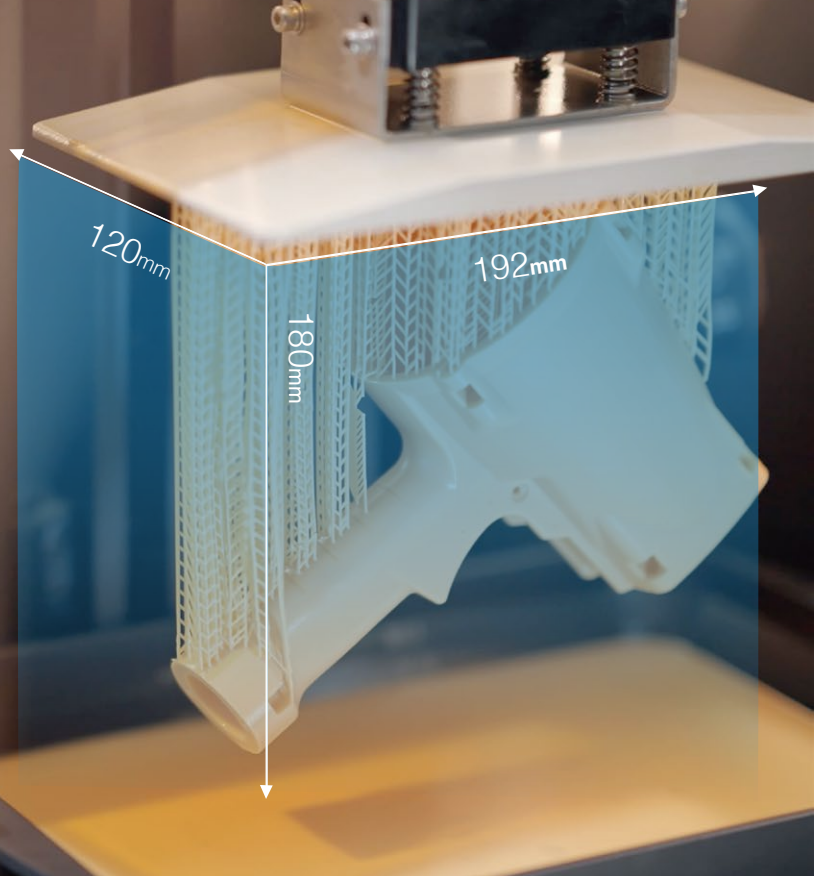
4K Resolution

4K resolution satisfy the demands of users for efficiency and details.



Large Print Size

Large format, rapid prototyping,
high efficiency printing.



Multiple Material Options

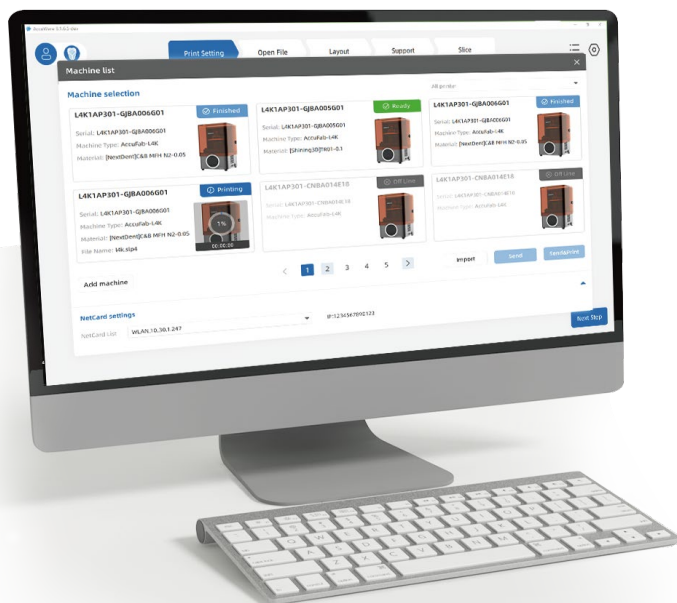
Shining Engineering Resin

Shining Engineering covers a wide range of materials for engineering 3D printing applications, includes Standard Resin, Bio-compatible Resin and Water Washable Resin, provides great size accuracy, surface quality, and low deformation rate.

Certified 3rd Party Material

Shining 3D partners with industry leading brands in engineering material, providing more possibility and flexibility.





Professional Software

Plug and Play

Guided interactive operation provides gentle learning curve, low learning costs.

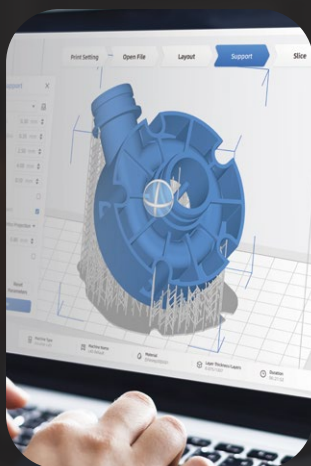
Free Updates

Push update of software and material packages.

Collaborative Management

Multi-equipment collaborative management, achieve rapid production in small batches.

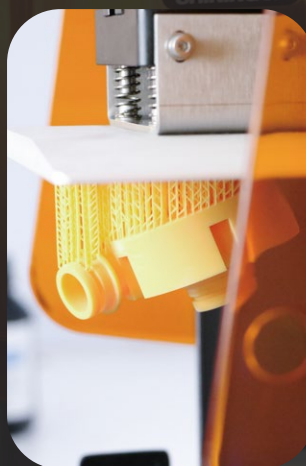
Data preparation



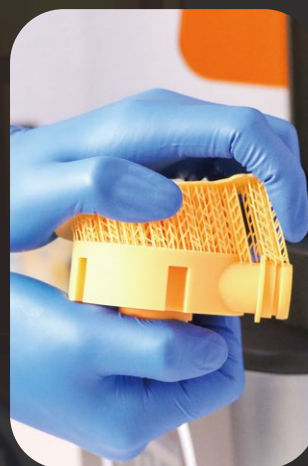
Add material



Print



Post-process

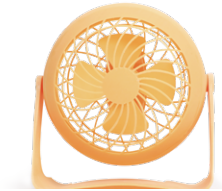


APPLICATIONS

SHINING 3D provides a wide range of engineering resin options to meet diverse quality requirements, create diverse application scenarios for AccuFab-L4K high-precision stereolithography 3D printers.

Standard Resin

Standard resin is a stable and high-performance standardized resin. It has great size accuracy as well surface quality, which is great for displaying details of the prints. It meets most prototyping, engineering, and low volume production needs.



Water Washable Resin

It's an environment friendly low odor resin, which is easy to clean by water. There is no worry about the dangerous by using alcohol or IPA. Water Washable resin has high surface quality, strong mechanical properties and good stability.



Rigid Resin

They are specifically engineered to deliver class-leading tensile strength and rigidity, as well as high print accuracy with low shrinkage, and to ensuring the long-term UV stability of printed parts. These prints have low water uptake and are easy to polish.



Durable Resin

Durable Resin can accept certain pressure without damaging the structure, suitable for engineering prototypes that need to withstand pressure or tension temporally. This is the right choice for Tough resin applications where a limited degree of impact adsorption and compression, low-stress bending and elasticity is required to avoid brittle fracturing.



Flexible Resin

Flexible resin with fine softness and good elastic feature, can simulate the deformation scenarios of different products during actual use. It deliver high elongation at break, combining high cushioning with long-term rebound and torsional strength thanks to their minimal structural degradation over time.



Medical Resin

Self-developed resin with medical equipment certification record, suitable for the printing of entry-level medical-related and medical aids products. i.e. wrist guards, orthodontic model



TECHNICAL SPECIFICATION

AccuFab-L4K

| | | |
|---------------------|------------------------------------|--|
| Optical Spec | Resolution | 3840×2400 |
| | Pixel Size | 0.05 mm |
| | Wavelength | 405 nm |
| | Light Intensity | 3 mw/cm^2 |
| | Light Source | UV LED + LCD |
| Print Spec | Print Size | 192 mm×120 mm×180 mm |
| | Print Speed | 10 ~ 50 mm/h |
| | Tolerance | ±0.05 mm |
| | Layer Thickenss | 0.025 / 0.05 / 0.075 / 0.1 mm |
| Environment Spec | Working Temperature | 20°C ~ 30°C |
| | Working Humidity | 30% ~ 70% |
| Others | Interface | 5"touch screen |
| | Connection | Wi-Fi/Enterenet/Thumdrive |
| | Weight | 19 kg |
| | Printer Dimensions | 360 mm×360 mm×530 mm |
| Available Materials | SHINING 3D Engineering Material | White Material: TR01、S1; Yellow Material: DM12; Transparent Material: SG01; Black Material: S2; Washable Material: W1 |
| | BASF Engineering Material | Durable Material: ST45、ST80; Rigid Material: RG35、RG50; Flexible Material: FL60、EL150 |
| | Third Party Certified Resin | Third party resin materials approved by SHINING 3D, also can be used in AccuFab-L4K High-Precision Stereolithography 3D Printer |

Obtained CE, RoHS, WEEE, FCC, Photobiological Safety International Certification

Notice: SHINING 3D reserves the right to explain any alteration of the specifications and pictures.