



Leading the World to Optimal Oral Health





A LETTER FROM OUR PRESIDENT AND EXECUTIVE DIRECTOR

As we reflect on our achievements and look to future opportunities for FDI World Dental Federation to have a powerful impact on global oral health, we are filled with great optimism and excitement.

Founded in 1900, FDI World Dental Federation is one of the world's oldest health professional associations. We have seen tremendous change and advances in the field of oral health during the course of our history.

FDI World Dental Federation is continuing to evolve with the times, and we are ready to seize the opportunities ahead. We have seen exciting new developments at the United Nations, the World Health Organization (WHO), and in countries around the world to promote the link between oral health and general health, to enhance access, and to strengthen oral health systems. With these developments, there is a unique window to improve the state of global oral health care at a time when the incidence of oral disease is surging. FDI is perfectly positioned to be the voice for the oral health professional globally, leading advocacy efforts to promote oral disease prevention and oral health literacy, and changing the future of oral health around the world.

Our ability to succeed in this endeavor will only be possible through strong partnerships and collaboration.

We want to partner with you, industry, national dental associations, international governmental organizations, national governments, academic institutions, and other sectors of society—and are open to your ideas and welcome your energy and involvement.

Together, let us commit to leading the world to optimal oral health.

Orlando Monteiro da Silva
President (2011–2013)
FDI World Dental Federation

Jean-Luc Eiselé, PhD
Executive Director



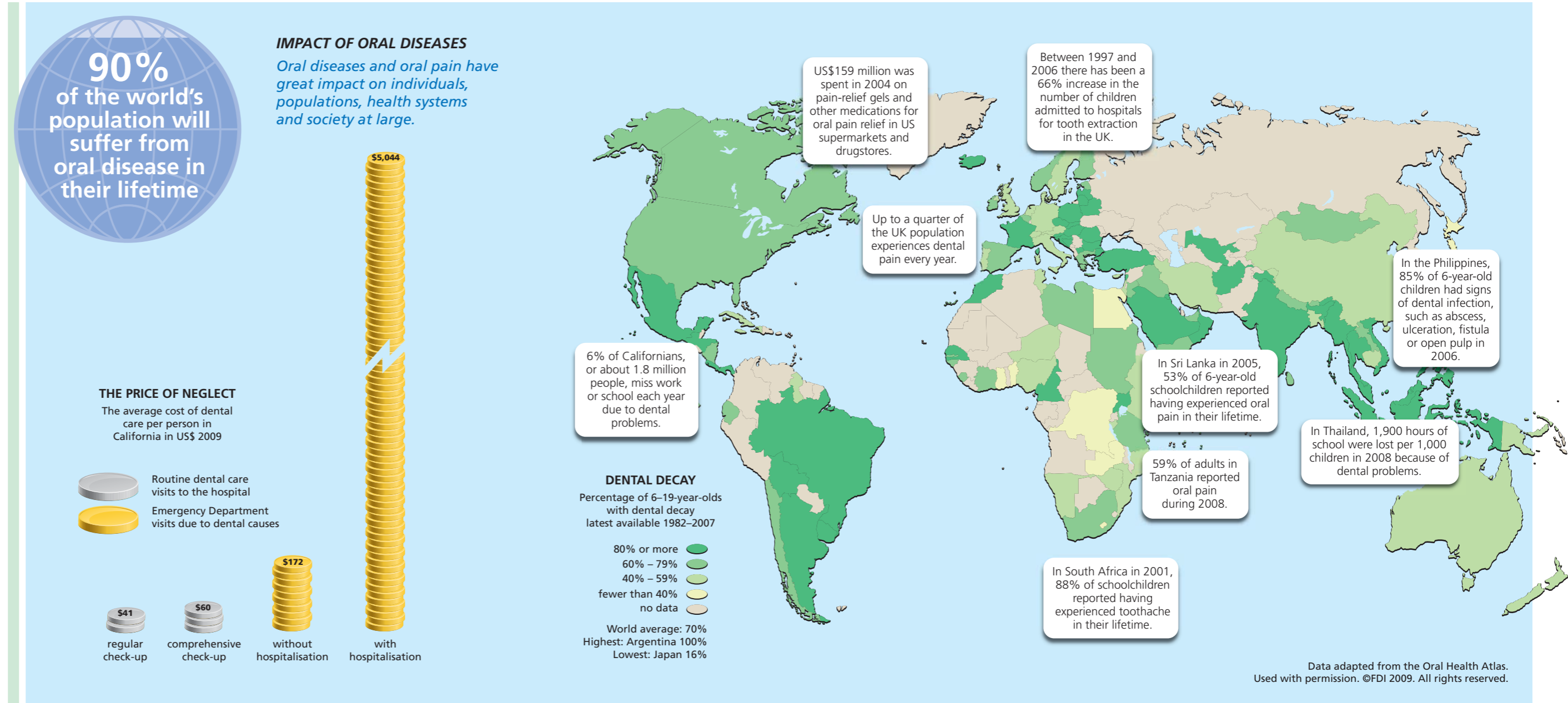
WHO WE ARE

FDI World Dental Federation seeks to achieve optimal oral health for all people across borders, uniting the world of oral health to harness the collective expertise and power of our members together with all sectors of society. As the profession's global and independent advocate, we champion disease prevention and oral health literacy and advance the ethics, art, science and practice of dentistry by stimulating and facilitating the exchange of information throughout the health care community.

FDI's membership includes approximately 200 national member associations and specialist groups from more than 130 countries, representing over 1 million dentists worldwide.

A non-governmental organization based in Geneva, Switzerland, FDI is governed by a General Assembly, with policy enacted by its Council and activities implemented through five standing committees comprising 60 volunteers from among its national member associations. Every year, some 300 delegates attend FDI's World Dental Parliament to debate and define the global future of dentistry.

FDI's long and distinguished history and accumulated experience in dental education, public health, and access to care make it a unique expert in the field and the only international organization in the field of oral health in official relations with WHO and other agencies of the United Nations. FDI's technical expertise is coupled with local knowledge and contacts through its vast worldwide network of dentists.



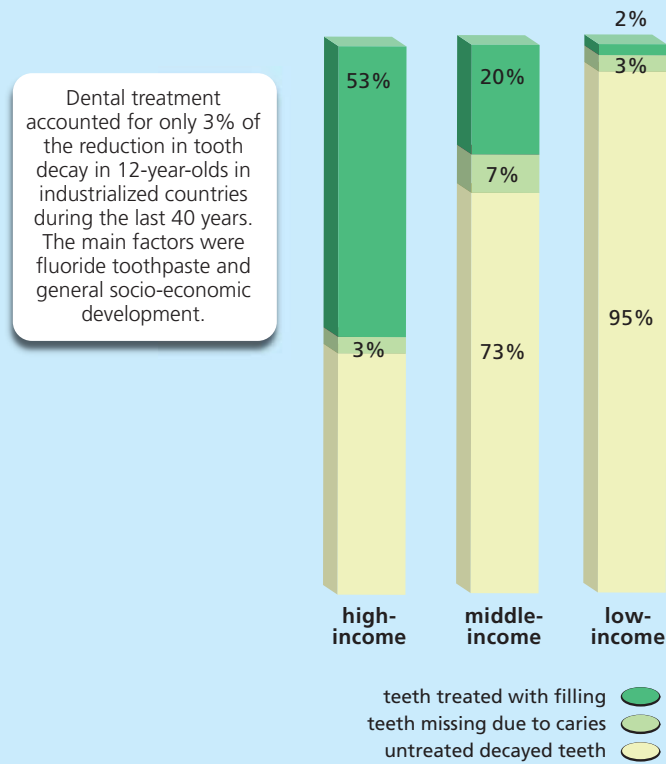
WHAT'S AT STAKE

Oral health is an integral component of overall health. Indeed, we believe that access to oral health care, just like access to health care, is an essential human right. Oral disease is one of the most common noncommunicable diseases worldwide, yet only 60% of the world's population enjoys access to oral health care: this contributes to the rising incidence of oral diseases. Globally, dental caries affect most adults and 60–90% of children, leading to millions of lost work and school days each year. Oral cancer is the eighth most common form of cancer in the world and the most costly to treat. Periodontal disease is directly linked to diabetes, heart disease, pre-term birth, low birth weights, and other health issues.

It is clear: there is much to be done and much at stake. We can only begin to confront the global oral disease epidemic by working together with a common purpose: achieving optimal oral health for all people across borders through a paradigm shift towards preventive care and the active promotion of oral health literacy.

MAPPING DENTAL CARIES

Dental decay remains largely untreated and there are widespread inequalities both between and within countries.



ANATOMY OF TOOTH DECAY

Proportion of Decayed, Missing and Filled Teeth (DMFT) in children aged 11–14 years by nation grouping 1991–2004

LET'S WORK TOGETHER!

The incidence of oral disease is accelerating globally and FDI World Dental Federation, as the representative of over 1 million dentists and with direct official access to WHO, is uniquely positioned to be at the forefront of the fight for optimal oral health for all people across borders.

Our collective success can be achieved only by engaging partners from all sectors of society. Joining our work and partnering with us does not have a set definition: indeed, there are many ways to engage with us, such as helping us promote the Global Caries Initiative, supporting our work developing oral health in Africa, or being an advocate for World Oral Health Day.

Contact us so that together we can find the best way of working together toward our common goal and to support your needs.

Between 5% and 20% of populations suffer from severe forms of gum disease, with formation of deep pockets.

Cats, dogs and other animals are prone to calculus and gum disease as well; appropriate diet and regular tooth cleaning can help.

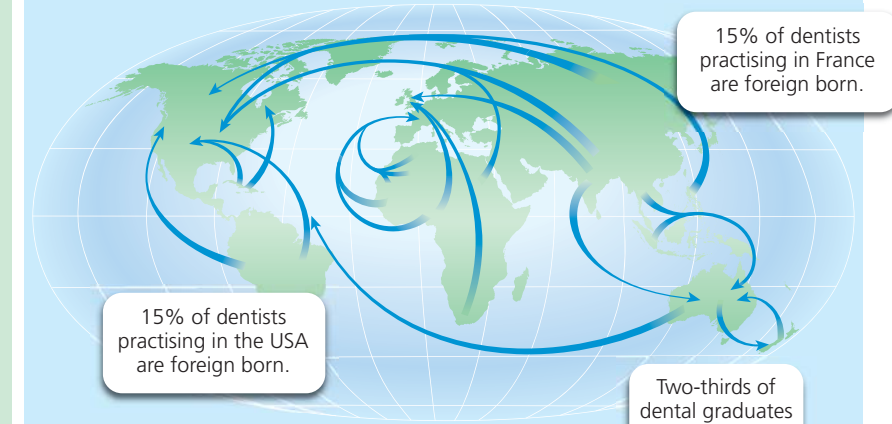
Measuring gum disease and oral hygiene
There are several ways of measuring the prevalence, severity and impact of gum diseases, including the assessment of:

- bleeding
- pocket depths
- whether or not teeth are loose
- the presence and severity of dental plaque.

The Community Periodontal Index of Treatment Needs (CPITN), developed by the World Health Organization (WHO), is one of the indices used to measure these aspects in population surveys.

MIGRATION OF DENTISTS

The global oral health workforce is in constant change. Innovative solutions are required.



“Planned international recruitment of oral health professionals can only be a partial solution to domestic shortages. It is essential that international recruitment be done without detriment to health services of countries.”
FDI Policy Statement

WHAT DO WE DO... AND HOW CAN WE PARTNER WITH YOU TO ACHIEVE YOUR ORGANIZATION'S GOALS?

Global Health Promotion

Global Caries Initiative—We are engaging with a wide and diverse range of stakeholders around the world to effect the paradigm shift to a preventive model of caries management through the Global Caries Initiative.

Founding partners: P&G; Colgate-Palmolive; Unilever; GlaxoSmithKline; and W. Wrigley Jr. Company.

Oral Health Through Fluoride Initiative—We are working closely with WHO and the International Association for Dental Research (IADR) to promote oral health through the use of fluoride.

Advocacy

Noncommunicable Diseases (NCDs)—We are allying with partners in the oral care and health care communities in the fight against NCDs, and are committed to securing and consolidating the place of oral health on the global health agenda.

Health Policy Development—We are a key driver for health policy initiatives such as the joint FDI WHO/AFRO report on standardization of oral health information and Rwanda's Oral Health Policy and, in line with our strategic Vision 2020, will continue to advise governments and intergovernmental bodies on oral health policy.

Tobacco Control and Prevention—In the light of serious risk to oral health from smoking and tobacco products, we are adding our voice to international tobacco control campaigns and actively engaging the oral health care team in tobacco control and prevention.

ORAL HEALTH AND GENERAL HEALTH

The mouth can reflect the state of general health. Conversely, oral diseases can have an impact on general health.

Dental treatment is required before heart surgery to avoid complication from dental infections.

Edentulousness (loss of teeth) within the elderly population results in impaired ability to chew and can lead to malnutrition.

Dental infections have been associated with higher increased risk for pneumonia.

The mouth may be a reservoir for bacteria associated with stomach ulcers.

Gum disease can complicate diabetes.

Oral bacteria are associated with infective arthritis.

Saliva and oral swabs are used to detect compounds, genes, diseases and conditions, as well as to identify individuals through their DNA.

Gum disease can be the starting point for noma.

Oral bacteria are associated with infective endocarditis (inflammation of the heart's inner lining).

Gum disease has been associated with higher risk of cardiovascular disease.

Gum disease has been associated with higher risk of pre-term babies.

Gum disease has been associated with higher risk of low-birthweight babies.

Early intervention using the Castillo-Morales Manual orificial Therapy and a specially designed palatal plate can improve orificial function and facial growth in children with Down Syndrome.

Data adapted from the Oral Health Atlas. Used with permission. ©FDI 2009. All rights reserved.

Development Projects

Live. Learn. Laugh. We are promoting good oral hygiene and practice in communities around the world through Live. Learn. Laugh., an innovative partnership with Unilever Oral Care, that enables participating National Dental Associations (NDAs) to implement oral health projects locally and promotes twice-a-day brushing with a fluoride toothpaste. Supported by Unilever Oral Care.

Education

Congress—We are providing a unique opportunity every year for professionals and all other sectors related to oral health care to meet and learn from one another during our Annual World Dental Congress, the leading global event for oral health professionals.

Continuing Education—We are supporting certified programs for continuing dental education and professional development throughout the year—on average one course every two weeks, somewhere in the world—for dentists to maintain an up-to-date clinical and theoretical knowledge of the art and science of dentistry.



Our Vision for the Future

In order to realize FDI's vision of "leading the world to optimal oral health," we recognize the critical importance of establishing innovative and strategic public-private partnerships. Our Vision 2020 paves the way for a new model of oral health care, led by dentists in collaboration with a wider range of stakeholders from all sectors of society, focusing on the following areas:

Meeting the increasing need and demand for oral health care—There are stark inequalities in access to proper oral health. Challenges and opportunities to meet this unmet need include improving public oral health literacy, optimizing workforce planning and retention strategies, providing adequate resources for education and training, and evaluating the effectiveness and appropriateness of different workforce models.

Expanding the role of oral health care professionals—There is now broad recognition that oral disease shares common risk factors with other NCDs, and that oral disease cannot be addressed in isolation from other health issues. The rise of a new type of oral health worker provides an opportunity to reshape and expand the role of oral health care professionals.

Shaping a responsive educational model—Current traditional models of dental education have not yet been able to adequately address disparities in oral health. Moreover, there is a growing disconnect between dental and medical education, despite wide recognition that oral health is an integral component of general health. We are working to support the reshaping of educational models to better equip members of the oral health care workforce team for the challenges.

Mitigating the impacts of socio-economic dynamics—Socio-economic factors have a significant impact on oral health care resources and policies. In times of economic hardship, resources tend to be drawn from oral health care and patients tend to delay consultation and treatment. Conversely, economic upturns tend to foster an increase in demand that must be met. We are working to ensure the sustainability of oral health care delivery and of our profession through economic ups and downs.

Fostering fundamental and translational research and technology—At present, the field of oral health is experiencing substantial difficulties in implementing research findings and technological innovations into daily practice in a timely fashion. We believe there is an important opportunity to develop a consensus and science-based approach to oral health care.



Mission

FDI's mission is to:

- be the worldwide, authoritative and independent voice of the dental profession
- promote optimal oral and general health for all people
- support the member associations in enhancing the ability of their members to provide oral care to the public
- advance and promote the ethics, art, science and practice of dentistry





FDI World Dental Federation
Tour de Cointrin, Avenue Louis Casaï 84
Case Postale 3
1216 Genève-Cointrin
Switzerland

T +41 22 560 81 50
F +41 22 560 81 40
info@fdiworldental.org
www.fdiworldental.org

Facebook: www.facebook.com/#!/FDIWorldDentalFederation
Twitter: @FDI_WorldDental
LinkedIn: FDI World Dental Federation



This brochure was created through an educational grant by Henry Schein Cares.